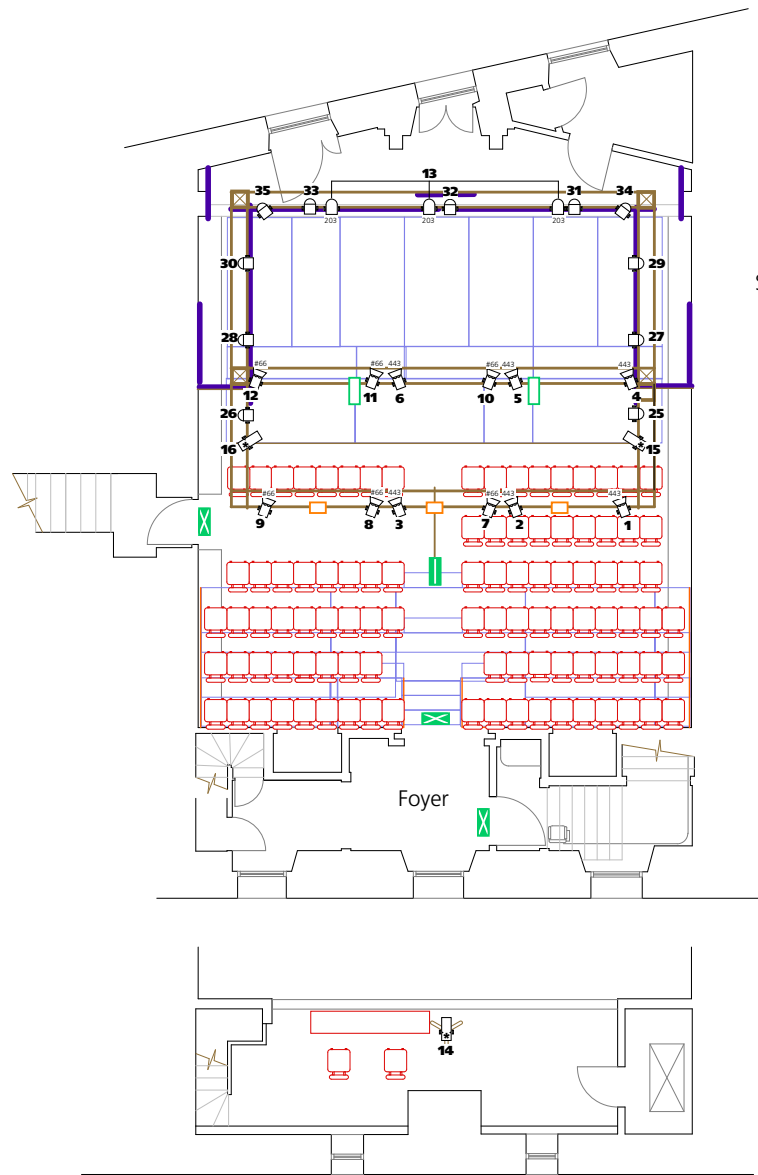


**C aquila**  
 Roman Eagle Lodge  
 Level +2  
 Main Theatre



Stage area  
 7.3m W x  
 4.4m D  
 approx

Control  
 gallery

lighting

- 300W Profile zoom
- 500W Fresnel
- Source Par WFL 375W
- LED Parcan or wash unit
- refocusable lantern
- gel number (Rosco E-color/Lee Filters)
- gel number (Rosco Supergel)
- 17-20** by arrangement, these channels can be made available for repatching

key

- escape route sign (maintained)
- bulkhead (maintained)
- bulkhead (non-maintained)
- housetlight
- working light (white)
- working light (blue)
- fittings/furniture
- truss
- scaffolding at grid height
- scaffolding upright
- scaffolding waste and knee rails
- solid handrail
- black drape
- openable black drape on track
- FOH display board/partition
- internal poster wall/drape
- limit of playing area
- no scenic pieces downstage of this line
- seats (fixed)
- seats (can be removed by arrangement)

rostra/steps/steeldeck heights

- + 180mm
- + 360mm
- + 540mm
- + 720mm
- + 900mm
- + 1080mm
- + 1260mm
- + 1440mm

C venues ltd accepts no liability for any inaccuracies  
 This plan is provisional and subject to change

For further information please contact C venues on  
 +44 (0)845 260 1030 or email production@cvenues.com

Copyright © C venues ltd – plan updated 1 July 2011

Scale  
 0 1m