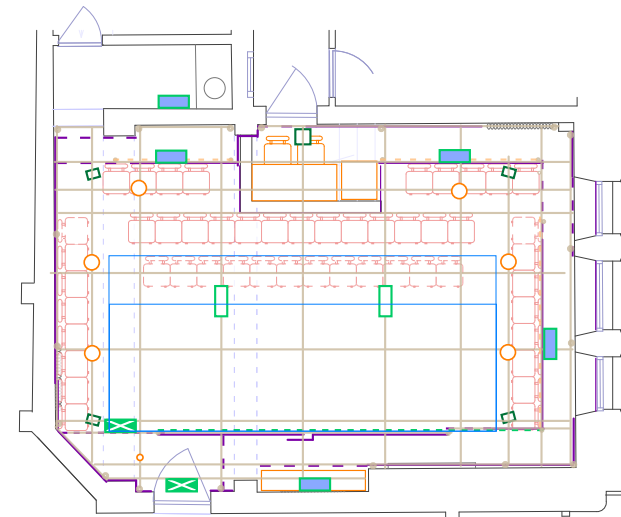


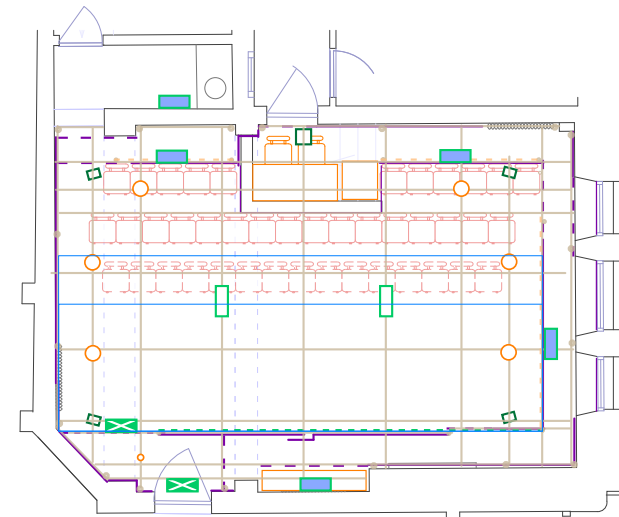
**Standard thrust layout**

*This is the default layout*  
 Options for stage size and seating (approx):  
 4.8m W x 2.9m D with 46 seats (default seating)  
 4.8m W x 2.1m D with 54 seats  
 (Seating adjustments for entrances:  
 -2 seats for DSL, -2 seats for DSR, -1 seats for USR)



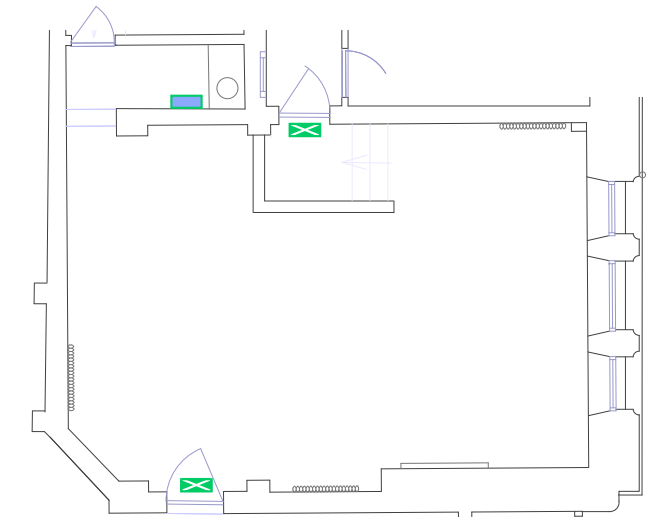
**Wide thrust layout**

*This is a relatively quick change from the default layout*  
 Options for stage size and seating (approx):  
 6.4m W x 2.9m D with 38 seats  
 6.4m W x 2.1m D with 50 seats  
 (Seating adjustments for entrances:  
 -1 seats for DSL, -1 seats for DSR)



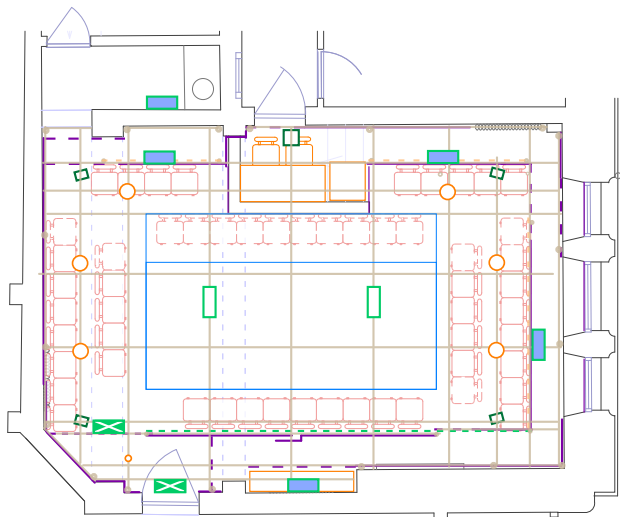
**Wide end-on layout**

*This is a relatively longer change from the default layout*  
 Options for stage size and seating (approx):  
 8m W x 2.9m D with 42 seats  
 8m W x 2.1m D with 27 seats



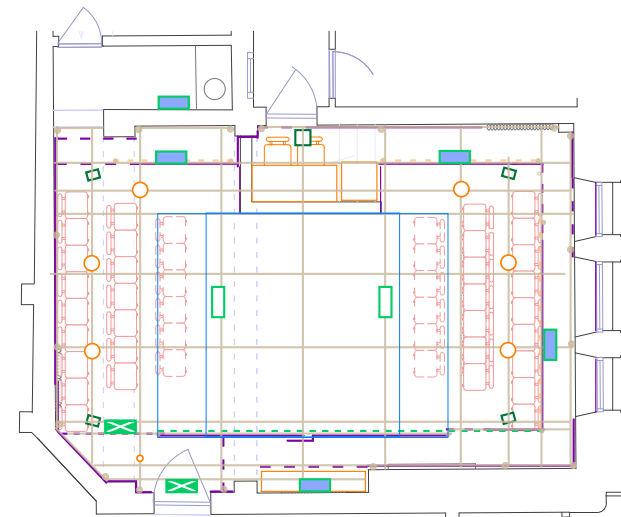
**Empty room layout**

*This layout is only available for use outwith the summer festival period*  
 Room size 8.6m L x 5.6m D



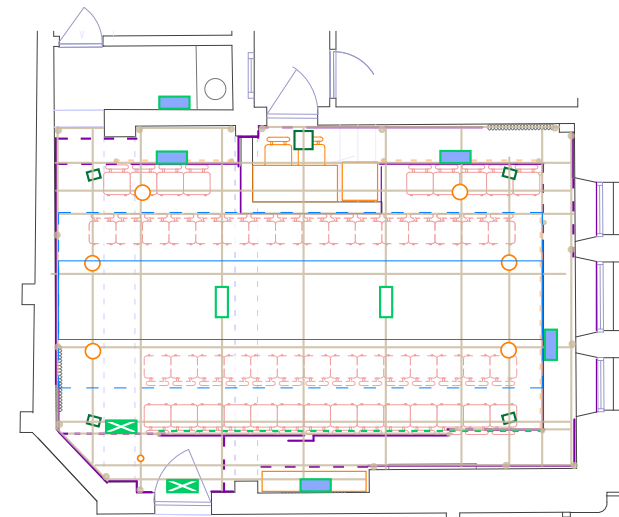
**In-the round layout**

*This is a relatively quick change from the default layout*  
 Options for stage size and seating (approx):  
 4.8m W x 2.9m D with 45 seats  
 4.8m W x 2.1m D with 55 seats  
 (Seating adjustments for entrances:  
 -2 seats for DSL, -2 seats for DSR, -1 seat for USR)



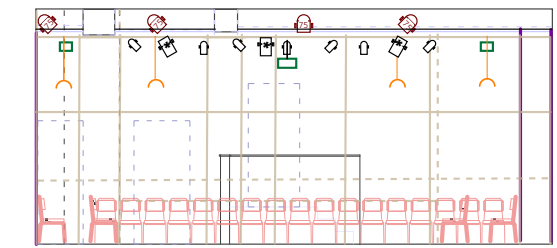
**Classic traverse layout**

*This is a relatively longer change from the default layout*  
 Options for stage size and seating (approx):  
 3.7m W x 4.8m D with 32 seats  
 3.7m W x 3.2m D with 44 seats

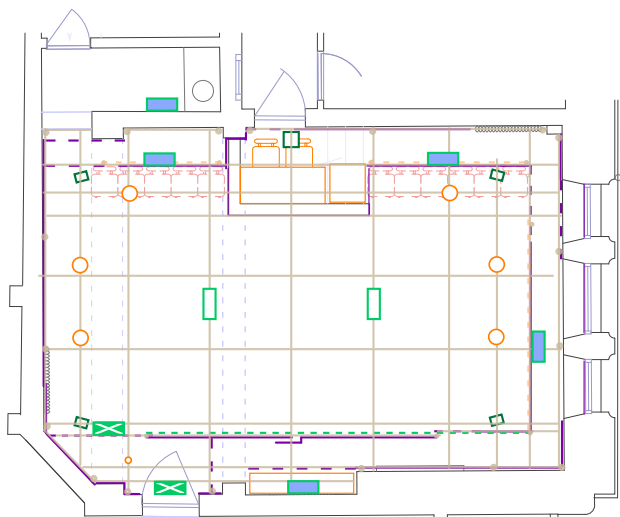


**Catwalk traverse layout**

*This is a much longer change from the default layout*  
 Options for stage size and seating (approx):  
 8m W x 2.9m D with 23 seats  
 8m W x 1.3m D with 53 seats  
 (Seating adjustments for entrances: -1 seat for DSR entrance)

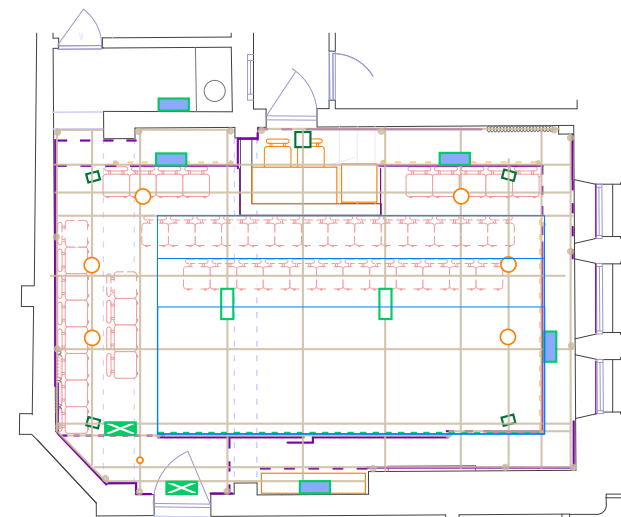


**Section**



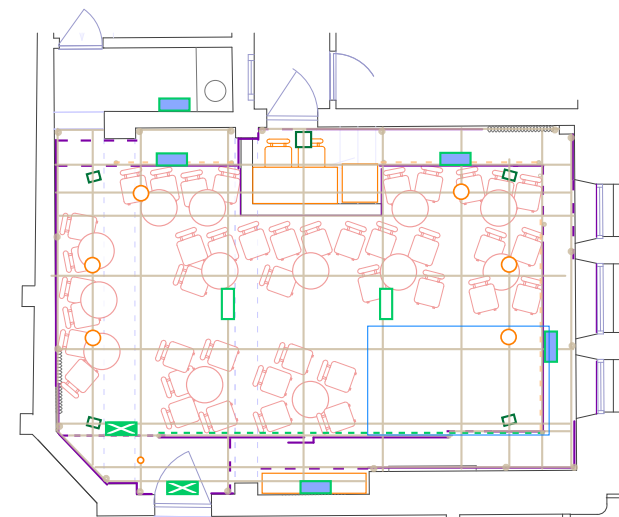
**Empty black box layout**

*This is a much longer change from the default layout*  
 Space 8m L x 3.7m W Maximum capacity 60 Some seating possible



**Corner layout**

*This is a relatively longer change from the default layout*  
 Space size 8m L x 3.7m W (4.5m W at either end of the space)  
 Options for stage size and seating (approx):  
 6.4m W x 3.7m D with 21 seats  
 6.4m W x 2.9m D with 35 seats  
 6.4m W x 2.1m D with 57 seats  
 (Seating adjustments for entrances: -2 seats for DSL)



**Cabaret layout**

*This is a much longer change from the default layout*  
 Options for stage size and seating (approx):  
 Between approx 20-40 seats depending on stage size and position

**key**

- escape route sign (maintained)
- bulkhead or downlight (maintained)
- bulkhead (non-maintained)
- houselight
- projector
- speaker
- scaffolding at grid height
- scaffolding upright
- black drape
- openable black drape on track
- openable black drape not on track
- white drape
- edge of playing area
- seats (fixed)
- seats (removable by arrangement)
- seats (may be added by arrangement)

**lighting**

- Profile (300/500/575W or MR16 12V)
- Birdie MR16 12V 38° or equivalent
- LED Par or wash light RGB or RGB+
- ColorDash LED RGBW or other LED unit
- re-focusable and re-gellable lantern

Auditorium approx 8m L x 4.5m W  
 Ceiling beams approx 3.46m Suspended ceiling approx 3.5m  
 Clearance under lighting bars approx 3.25m, under lights approx 3m

This plan is indicative and subject to change  
 All critical details should be verified in situ

For further information please contact C venues on  
 +44 (0)131 581 5520 or email production@cvenues.com

Copyright © C ARTS | C venues – plan updated 10 May 2025

Approximate  
 Scale