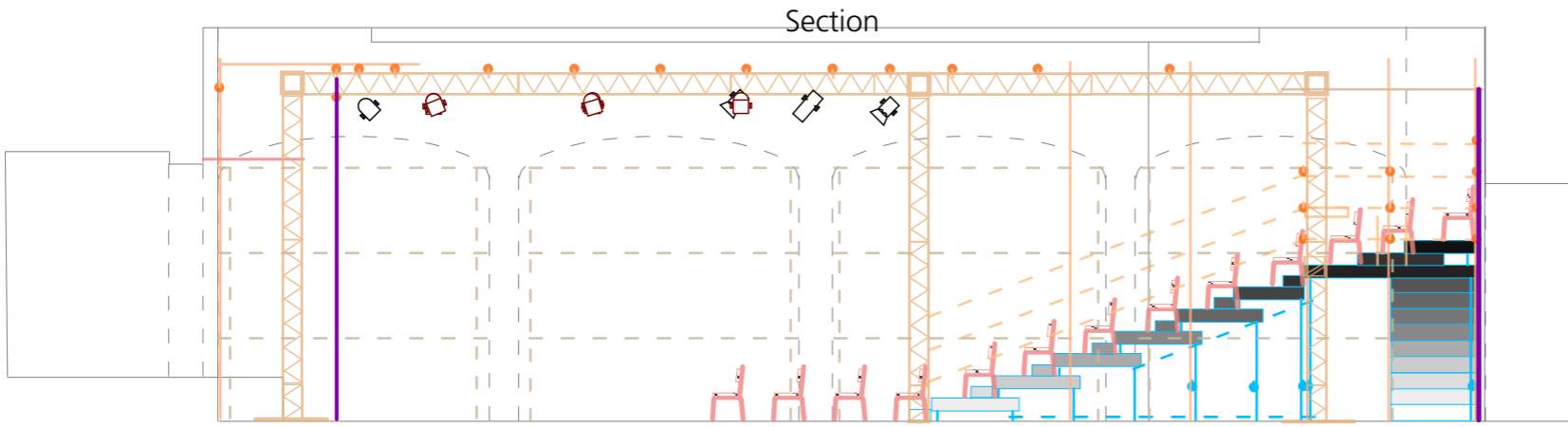


End-on format
This is the standard format for this space



Default format: end-on format with seats 530mm wide
 Stage size options approx 9.1m W x 4.8m / 5.6m / 6.4m / 7.2m / 8m D
 Seating approx 115 / 128 / 143 / 168 / 173 depending on stage size
 Stage headroom approx 4.5m to lanterns, 4.5m to bottom of truss, 4.8m to lighting bars, 5.1m to ceiling

key

- Basic LED Par or wash RGB or RGB+
- LED Par or wash light RGB or RGB+
- 500W/575W/650W Profile wide angle zoom
- 500W/650W Fresnel or wash light
- Par 56 500W MFL or Source Par MFL 575W
- Par 64 CP62 1kW
- re-focusable and re-gellable lantern
- gel number (Lee Filters/Rosco E-Colour)
- gel number (Roscolux/Rosco Supergel)

- escape route sign (maintained)
- bulkhead (maintained)
- bulkhead (non-maintained)
- houelight
- dimable or switchable working light (white)
- dimable or switchable working light (blue)
- projector
- speaker
- fittings/furniture
- internal screen/display board
- truss
- scaffolding at grid height
- scaffolding upright
- handrail
- black drape
- openable black drape
- openable black drape on track

- seats (fixed)
- seats (removable by arrangement)
- seats (can be added by arrangement)